



Jack Dee (£400 + £25 postage and packaging) - "Is it me or are you slightly out of focus?"



Jeff Goldblum (£450 + £25 postage and packaging) - "What Are You?" - David Mamet"



Kevin Spacey (£500 + £25 postage and packaging) - "Sometimes the person who is most logical is the person whom we call insane."

Trinity is proud to announce the launch of Larger Than Life - our celebrity photo exhibition celebrating life and laughter

We're really excited about Larger Than Life. It's a totally new and different exhibition of photos of international celebrities - actors, sports people, comedians and musicians. People like Kevin Spacey, Jack Dee, Russell Brand, Paul Merton and Ian Hislop have already signed up and more stars are joining all the time.

Celebrity portrait photographer Rich Hardcastle is taking the pictures. Rich is renowned for his ability to capture the mood of the moment in a really relaxed and informal way.

Each of the limited edition prints will be signed by the celebrity and include their personal message in the form of a few witty or philosophical lines that sum up their take on life and laughter.

Buy your signed limited edition print today

This is an amazing opportunity to buy something really different to keep as an investment or to give as a special gift. All limited edition prints have original signatures, are mounted ready to be framed and come with a certificate of authenticity. Prices range from £200 - £500 and with a limit of just 50 prints per photo, they're going fast.

Visit www.trinityhospice.org.uk/largertanlife to view the images and read the inscriptions.

You can order using the tear off slip with this newsletter, online or by contacting the office to make a credit card payment.

P.S. Keep an eye on the gallery because more celebrities are joining the project, which runs for two years, all the time. We're getting truly amazing support from a whole host of stars of stage, comedy and sport so you never know when your favourite person might appear!

Trinity's new Clinical Director talks about the role of the modern hospice



Trinity welcomes Clinical Director Christina Edwards as a new member of our senior management team. Her first priorities are to lead our nurses, doctors and clinicians through a period of change and get the new inpatient centre up and running.

Christina started working life as a hands-on nurse and health visitor and progressed to senior management in the NHS. Her relationship with hospices stretches back many years as a non-executive director and trustee.

Read on for Christina's views on the role of the modern hospice in a changing health care landscape.

"The NHS is changing radically and Trinity needs to change with it to ensure that we maintain our position as end of life care provider of choice to our local NHS Primary Care Trusts. Around one third of our funding comes from the NHS and, we must ensure that our services fit with the Government's End of Life Care Strategy. This means demonstrating quality, efficiency and effectiveness in everything we do.

"Hospices have a huge role to play in achieving the national vision which is about more care in the community, closer working with GP practices and care homes and ensuring that people are not admitted to hospitals when they can be cared for in the community. Part of the challenge is a drive to support more people by extending palliative care to people with non-cancer illnesses.

"Patients and their families and carers have to continue to be at the centre of everything we do and plan to do. The opportunities afforded with the new building to advance care and to look after more patients at Trinity and in their homes are substantial.

"What really sets hospices apart from the NHS is the value of the 'whole person' approach whereby care extends beyond symptom control to practical and emotional support for patients and their families. The NHS cannot fund this level of care and it's where Trinity's independent funding enables us to make a really significant difference to quality of life.

"Thanks to their voluntary sector funding hospices can also continue their lead in developing good practice by testing innovations in care with pilot schemes and sharing these through education programmes.

"Lastly, I want to say that hospices are a great place to work and develop a career. There are lots of opportunities for volunteers too. And of course, at Trinity there's a fantastic, modern work environment in the shape of the new building."

Christina Edwards

Raffle winner



We are delighted to announce this year's winner of the raffle

Congratulations to Ms Sylvia Millier, a supporter of Trinity for over 10 years, who opted to take the £4000 cash. Well Done!

Trinity's shops - grab a bargain



Why not get down to one of our shops and buy yourself some designer outfits for the autumn?

Trinity's direct mail appeals and a thank you from Helen

Last year over £180,000 was raised from appeals.

Helen, a Trinity Hospice outpatient, would like to thank everyone for donating to her appeal. Over £18,000 was raised.

Wandsworth Friends' summer garden party



For the second year in a row, and while Trinity's own gardens are restored to their former glory, the Wandsworth Friends held their annual summer party in the tranquil haven that is the Chelsea Physic Gardens. With an ambitious £50,000 target, party goes and the committee managed to raise an incredible £54,589 in just two short hours. Better still, the motivation of an anonymous matching gift of up to £30,000 from a charitable trust meant that there was an extra special buzz about the night. It was once again a beautiful evening providing guests with a great opportunity to catch up with friends and raise money for Trinity over glasses of champagne and tasty canapés.

Janet Dobson, Chair of the Wandsworth Friends Committee said: "I am incredibly grateful to Savills for sponsoring the event, in particular Robin Chatwin and his team, for helping to make the evening such a success, as well as to all the committee members and their partners for helping on the night. The Physic Gardens have been a wonderful place, but we are really excited by the prospect of being able to return to the Trinity Gardens next summer."

We would like to thank all those on the Wandsworth Friends Committee, Savills, and guests and supporters of Trinity. We are delighted that the event and matching gift has raised enough to cover the work of both a community and ward nurse for an entire year.

Trinity invites you to visit the new inpatient centre

We are delighted to be able to invite you to visit Trinity for a tour of the new inpatient centre. If you would like to find out more, please call this number to get details of times of the tours.

Call 020 7787 1046



Emotional and psychological support at Trinity - working with people as individuals

Living with a serious illness can impact on many areas of a person's life as well as how they feel about themselves and their relationships with people close to them.

Some people find that it is at the point when they most need to talk to someone about how they are feeling that it becomes the most difficult thing to do.

Both the person with the illness and those close to them can find it hard to talk openly because they feel concerned that it might upset, hurt or worry the other person. It is sometimes difficult to acknowledge feeling lonely, sad or angry. It is also difficult to talk about how serious illness affects your life, your hopes and what you wanted to achieve.

At Trinity there are a number of different ways we support patients and those close to them, ranging from practical to some very complex emotional issues.

For some people it's a great relief to be able to talk to someone, outside their immediate family, who has time, patience and professional skills. Our nurses are here to support people in talking about how they feel and our social workers have particular expertise in helping with emotional or family issues. They can talk to people on an individual basis or work with families, friends and carers if that is what is wanted. One of the many ways we have supported carers this year was to hold a special carer's day at the Hospice.

They also advise about things like personal care services, help within the home and benefits so that people get the financial and practical support they need. The Citizens Advice Bureau operates from Trinity one morning a week to advise on debt and legal concerns.

Creative arts can help people to connect with themselves and express what their life means to them. They also bring joy and pleasure and give people the chance to find their own unique way of coping and moving forward.

The creative team consists of an art therapist, a community artist and an audio and visual artist. Art therapy is a special form of supportive counselling, which helps people to deal with emotional distress and particular difficulties in a confidential, one-to-one session. The art and craft groups offer a chance for people to discover new skills or get back to something they used to enjoy, in a supportive, social environment.

The members of our spiritual team are good listeners and also able to talk to patients and their families about the things that give life meaning. Whether that's on broader spiritual issues or specific religious concerns.

Trinity also offers bereavement support to people who have had a relative or friend cared for by the Hospice. Everyone who is bereaved will experience their loss in a very personal way. It is often hard for people to know how



"I would like say how impressed I was with all the staff at Trinity. You helped all of my family cope with this distressing time in our lives."

"Trinity made sure that not only was my wife cared for, but so was I and our three children"

"You were the calm in the storm that is grief"



"The art and craft group allows me to be a big kid again - it's my personal sand pit!"

"I appreciate the kindness, courtesy, thoughtfulness and professionalism of the care I received and the individual respect I have been shown."

"Thanks for being there for me"

to deal with the feelings they are experiencing and Trinity staff offer an opportunity to talk to someone who is outside the family or group of friends. Trinity also offers expert support to children and young people at this difficult time.

Our social work team supervises and supports 22 trained volunteer counsellors.

Six to eight weeks after a death can be tough time for those left behind – when the funeral is over and friends and relatives have had to get back to 'normal' life. This is when we follow-up all family members and friends we have contact details for to offer support.

Our bereavement service is here for people for as long as they need us. One of the ways we continue support is by organising our regular 'time for remembering' event. For more details about this please contact Pat Mooney.

What does it all cost each year?

- Bereavement and social welfare costs £200,000
- Spiritual care costs £25,000
- The work of the creative team including materials costs £46,500

If you can help us by giving a donation today, please use the form on the back of this newsletter. If you would like to find out more about the variety of different ways you can help us to continue caring, please call 020 7787 1000 or email fundraising@trinityhospice.org.uk

User Group congestion charge campaign pays off

Trinity is extremely appreciative of the help and support we receive from David Hart, Chair of our User Group and all its members - people who experience our services first-hand as patients.

Under David's direction, the User Group is contributing really valuable ideas and views that help to shape our work, from the food we serve to input into the national End of Life Care strategy.

Recent User Group achievements include bringing Dial-A-Ride on board and campaigning to the Mayor of London to obtain an exemption from the congestion charge for Trinity's nurses.

As a service user himself, David knows how much difference Trinity's full range of services make to patients, families and carers.

"The services are excellent," says David. "Hypnotherapy has helped me to sleep more naturally – it's better than morphine and drugs. I've also had help with writing a Will, setting up an advance decision about treatment and this afternoon I'm having reflexology."

Trinity Week - Monday 6 to Sunday 12 October

Trinity is a local hospice. A local hospice to over 750,000 Londoners. And yet sometimes we find out that people with friends and loved ones with terminal illnesses do not know about the specialist care that we offer.

In Trinity Week we would like to ask you to

- Make sure that other Londoners know that Trinity is their specialist end of life centre.
- Consider how you might help Trinity raise money to continue our work. Trinity's supporters have done phenomenal work to raise £5 million for our new inpatient centre. But our reserves are small and we are not a rich organisation.

So in Trinity Week take the time to consider how you might help.

Look out for Trinity Week deals from local pubs, bars and restaurants

Pubs, bars and restaurants in our local area are doing their bit for Trinity in all sorts of ways. Watch out for details in the local press and South West magazine. Here's a taster of what to expect ...

<p>morechampagne 5a More Place, Southwark, London SE1 2BY, Tel / Fax: 020 7403 0658 Are hosting our stunning Larger Than Life exhibition all week. Pop down and discuss life and laughter with a glass of champagne.</p>	 <p>TRINITY WEEK FLYING HIGH Tate recruitment employees are getting into the spirit of the week and jumping out of a plane on Saturday 11th October. If you are interested in doing the same please contact Laura Williams on 020 7787 1054 or lwilliams@trinityhospice.org.uk</p>
<p>Metro Garden Restaurant and Bar 9 Clapham Common Southside This hidden oasis will be adding a voluntary £1 to each bill for the whole week. Call 020 7627 0362 to book your table</p>	<p>The Exhibit Bar & Restaurant Cinema 12 Balham Station Road, London, SW12 9SG, will be making a donation of £1 for each cinema ticket purchased and £1 for a selected dish of the week. www.theexhibit.co.uk</p>
<p>The Tim Bobbin The Tim Bobbin, a lovely little gastropub on Lillieshall Road, SW4, are adding £1 to certain main meals sold this week</p>	 <p>Lost Society bar on 697 Wandsworth Road, Clapham, London, SW8, are creating special Trinity Cocktails for the week with £1 from each sold coming to Trinity Hospice.</p>

Come and see the Larger Than Life exhibition in September



Seven Dials, Covent Garden is supporting Larger Than Life by launching the first public exhibition. If you would like to view the Larger Than Life celebrity portraits, visit the exhibition at: 39 Earlham Street, Seven Dials, London, WC2H 9LD

On display from 12th September - 20th September excluding Sunday
Opening times: 11am - 6pm

"Seven Dials is delighted to be supporting this fantastic exhibition. Trinity is such an important centre for people living with terminal illness in our London community. We hope you will join us in supporting this local charity." Donna Lambert (Seven Dials)

Visit www.sevendials.co.uk for more information.



For media and PR enquiries please contact Susie Howard at Sister, susiehoward@sister-pr.com or Sarah Millar, sarah@sister-pr.com or Tel: 020 7287 9601

westside london

COVENT GARDEN HOTEL



DAVY'S
Est. 1870

Be part of Team Trinity 2009!



Last year 19 people ran for Trinity in the London Marathon and raised almost £30,000 for the hospice. If you get a place this year, you can become part of Team Trinity and get access to free physiotherapy talks with an expert Marathon runner, support before and after race day and a massage after the Marathon itself at a reception where all your friends and family will also be welcome. If you haven't applied via the ballot it is not too late to become part of the Team - all you need is the spirit to run and fundraise too. Call Laura on 020 7787 1054 to find out more.

Skydiving with Trinity



Why don't you and your friends sky dive during Trinity week? Call Laura Williams on 020 7787 1054.

Netball team Capital NUNS bares all to produce a cheeky but tasteful fundraising calendar



Capital NUNS, London's leading netball club based in Southfields, has embarked on a brave, cheeky and decidedly eye-catching project. Inspired by the Rylstone Women's Institute, immortalised in the film *Calendar Girls*, the team will be posing nude in iconic London settings such as Carnaby Street and Trafalgar Square for a fundraising calendar.

It will all be in thoroughly good taste with carefully positioned props and camera angles to protect the girls' modesty and ensure there are no explicit shots.

Renowned people photographer Wolf Marloh is donating his services free of charge to create images that resemble glamorous film shots. Wolf's work can be seen in the National Portrait Gallery as well as in books, magazines and broadsheet newspapers.

The Capital NUNS girls don't do anything by halves when it comes to supporting Trinity. Three years ago they broke a world record with the longest ever netball match raising a phenomenal £30,000.

Netball team member Sarah Jenkins says: "We'd joked about doing a calendar in the past and then we realised we're all getting older so we'd better get on and do it! We're hoping to beat the £30,000 we raised last time."

Wolf is shooting the pictures now so look out for the calendars in the autumn. They'll be available through the Trinity website – www.trinityhospice.org.uk. To reserve your calendar complete the request form on page 8 and return to Trinity.



Donation / request form

Use this form to make a one-off gift to Trinity Hospice or request further information.

Title.....First name.....

Surname.....Date of birth.....

Address.....

.....Postcode.....

Email.....Telephone.....

(If happy to be contacted in this way)

I would like to make a gift of:

£25 £50 £100 £150 £1000 other.....

I enclose a cheque made payable to: Trinity Hospice.

Or please debit my: Visa / CAF / Maestro / MasterCard
(please delete as appropriate).

Card no

Last 3 digits on back of card.....Issue no.....

Start date.....Expiry date.....

Signature.....Date.....

Please do not acknowledge.

giftaid it Please make every pound you give worth 28% more to Trinity Hospice at no extra cost to you by ticking this Gift Aid declaration:

I am a UK tax payer and would like to Gift Aid all declarations I have made to Trinity Hospice since 6 April 2002 and all future donations until I notify you otherwise.

I understand that I must pay income tax and / or Capital Gains Tax at least equal to the sum that Trinity Hospice reclaims on my donations in the tax year. I can cancel this declaration at any time. (If you are unsure if your gift qualifies for Gift Aid tax relief, please ask your local tax office.)

Data protection: we would like to keep you informed about our work at Trinity. If you do not wish to receive further correspondence, please tick this box.

Trinity Hospice
30 Clapham Common North Side,
London, SW4 0RN
Tel: 020 7787 1000
Fax: 020 7498 9726
enquiries@trinityhospice.org.uk
www.trinityhospice.org.uk,
Registered charity no: 1013945

How to buy a Larger Than Life portrait

Remember there are only 50 limited edition signed prints of each portrait so once they are sold they are gone!

There are three ways to pay for your unique limited edition print.

1. Make your cheque payable to: Trinity Hospice Shops Ltd and post to Trinity Hospice, 30 Clapham Common North Side, London SW4 0RN
2. To pay by credit card call Trinity on 020 7787 1086
3. To pay online, go to www.trinityhospice.org.uk/largertanlife

Title.....First name.....

Surname.....

Address.....

.....

.....Postcode.....

Email.....

(If you are happy to be contacted in this way).

Daytime tel.....

I am interested in buying the following print(s).....

.....at a cost of.....

.....plus £25 postage and packaging per print.

I enclose a cheque for £.....made payable to:

Trinity Hospice Shops Ltd.

Or please debit my: Visa / Maestro Switch / MasterCard / Solo /

Delta (Please delete as appropriate). Diners & American Express not accepted.

Amount to be debited £.....

Card no

Security code (last 3 digits on back of card).....

Issue no.....

Start date.....Expiry date.....

Signature.....Date.....

Data protection: We would like to keep you informed about our work at Trinity. If you do not wish to receive further correspondence, please tick this box.

If you are interested in hosting a Larger Than Life exhibition, please call Fran Maxted on 020 7787 1086 or email fmaxted@trinityhospice.org.uk. We'd love to hear from you.

See Diary Dates for more exhibitions venues.

Do you want a Calendar?

If you would like to order a calendar tick here - we will let you know when they become available.

Every print purchased helps Trinity to maintain its vital care services for terminally ill people

It's fantastic that so many famous people are supporting Trinity and helping us to raise funds in this unique way. We need to raise nearly £8 million each year to maintain our care services for our patients and their families and we rely on the generosity of people and organisations in our community to achieve this.



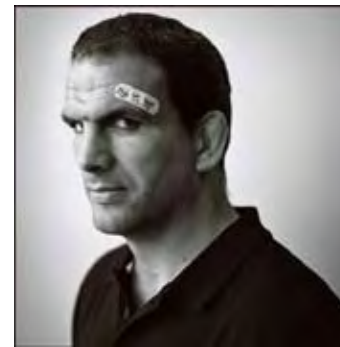
Barry Humphries: (£450 + £25 postage and packaging) - "Always watch your back!"



Comming soon ...
Ian Hislop & Paul Merton



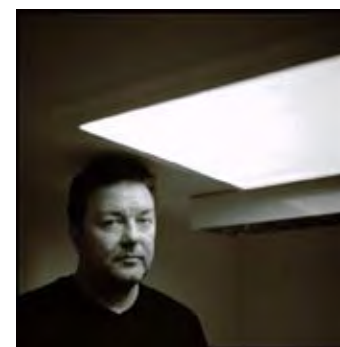
Willie John McBride (£400 + £25 postage and packaging) - "The answer is always on the scoreboard"



Comming soon ...
Martin Johnson



Jimmy Carr (£400 + £25 postage and packaging) - "You live and learn, then you die and forget it all!"



Comming soon ...
Ricky Gervais

Diary Dates

SEPTEMBER

Opening of the new inpatient centre (telephone for details)

12 - 20 Larger Than Life launch exhibition at 39 Earlham Street, Seven Dials, London, WC2H 9LD

13 September – autumn sale at Trinity

21 September - If you did the Nightingale Walk and would like to come to the cheque presentation, come and join us and the committee at the Nightingale Pub

25 September - Trinity invites Masonic Lodges to visit the hospice

OCTOBER

Trinity Week - 6th - 12th October

Larger Than Life Exhibition at morechampagne, 5a More Place, London, SE1 2BY

Sky Dive with Trinity

Cocktails at the Lost Society Bar

Meals at the Tim Bobbin

Meals at The Metro

See a film at The Exhibit Bar and Restaurant Cinema

30 October: Final call for entries for our Golden Bonds. If you have a place in the Marathon why not run for Team Trinity? Contact Laura to find out what benefits we can offer.

NOVEMBER

13 November - Sisters and Sirens Art Exhibition at The Gallery in Cork Street

20 November - Mall Galleries dinner and quiz

DECEMBER

11 December - Light Up a Life

Trinity Hospice

30 Clapham Common North Side

London SW4 0RN

Tel: 020 7787 1000

Fax: 020 7787 1020

www.trinityhospice.org.uk

Charity no: 1013945